

MINUTES OF THE PARISH COUNCIL MEETING

27 JANUARY 2025, 7pm, Clubroom

Present Parish Councillors: Pauline Hedges (meeting Chairman), Paul Ghent,
Sue Symons, Nick Walker; Clerk Susan Turner; Guest: Revd Debbie Veel.

1 WELCOME & APOLOGIES Apologies Paul Gaskell.

2 PUBLIC SESSION No members of the public present.

3 MINUTES OF PREVIOUS MEETINGS of 30 September agreed and signed.

4 DECLARATIONS OF INTEREST in items on the Agenda, none.

5 REPORTS TO MEETING

.1 Parish Councillor resignation and vacancy

The Chairman has regretfully accepted the resignation of Parish Councillor Chris Alliston, submitted prior to the last (September) meeting. Chris will continue to liaise with the Parish Council in his roles as Parish Footpaths Warden and Clubroom Secretary.

'Very sorry to see you're leaving the Parish Council. You've been a great help with the footpaths and a sensible voice for our planning matters, for which I for one will miss...' 'Chris made a really valuable contribution to the group. Glad he is still going to report to us on other matters.'

A formal notice of Vacancy to be submitted to BDBC.

.2 Devolution and Local Government Reorganisation See **APPENDIX I**

Discussion focussed on the separate concepts of i. 'Devolution' and ii. Local Government Reorganisation into Unitary Councils.

i Devolution = 'All areas of England are to be part of regional Strategic Authorities with an elected Mayor'.

- A 'Hampshire & Solent' Combined Authority will include areas presently covered by Hampshire County Council – which is all two-tier – and Southampton and Portsmouth City Councils and the Isle of Wight which are each separate Unitary Councils.

- Government is to confirm by end January whether the 'Hants & Solent' Combined Authority has been accepted for Priority Devolution.

- If Priority Devolution goes ahead, Elaine Still has agreed to continue as our County Councillor for another year. Government Consultation is scheduled for February.

ii Re 'Local Government Reorganisation' it is suggested that a Unitary in North Hants might include Basingstoke & Deane, Hart, Rushmoor and maybe other(s).

(Noting the 'Heart of Hants' Unitary discussed in 2016 included Basingstoke & Deane, Hart, Rushmoor, New Forest and Test Valley.)

6 NEWNHAM 900

Newnham's formal origins as a settlement can be linked to building a stone Church; the foundation date of St Nicholas' is thought – from available information – to be 1124-1125 AD. Thus 14-15 June are assigned formal celebration dates, though additional events may be held throughout 2025.

.1 Newnham 900 Committee meeting of Wed 22 January – *Report from Sue Symons.*

- Sunday 15 June, Bishop Winchester is attending church service, this in the diary.

- Events on the Green initially planned for Sat 14 June with a back-up date in September.

i A Survey Monkey request has been circulated to all in the Parish who can be reached via email and whatsapp – seeking feedback and expressions of interest – and asking if would wish to purchase tickets for a medieval-style dinner provided by the Old House at Home.

ii The 900 Committee is also compiling a comprehensive Lottery funding application, comprising a wish-list for the Newnham 900 events, and a linked application for restoration of, and a lasting memorial to be located in, the Oppe garden.

iii For Plan B without Lottery funding, events must be curtailed to a budget. The Committee hope to know by 07 April Parish Assembly whether or not their bid has been successful.

.2 Parish Council involvement / contribution

NOTED Permission sought and received from the Earl of Malmesbury to use the Green.

AGREED Unanimously to Committee request for the Parish Council to officially lead on the event which will be covered by the Parish Council insurance.

TO CONSIDER

- Parish Council funding contribution (if needed) see 8.2 below.
- Grass / vegetation cutting along Church Path – ref 10.3 below.
- Mowing and maintenance preparation for the Green – ref 11.3 below.

7 SPRING PARISH ASSEMBLY – INCLUDING NEWNHAM 900

.1 Venue and date agreed Clubroom Monday 07 April, 7pm.

.2 Speakers for

- i Newnham 900
- ii HIWARG (Hampshire & Isle of Wight Amphibian & Reptile Group).

8 FINANCE

.1 Accounts to date – APPENDIX II – Bank reconciliation @ 25 January = £28,401.07.

Payments since last meeting of 30 September

17	PB – Compost ref donation 300x wild Primroses	£50.00
18	PGGM (2874) – Green cut, pond & RL triangles	£135.00
19a	Terrain Tyres – Mower new tyres x two	£96.50
19b	Micheldever Tyres – Mower inner tubes	£30.74
20	Clerk – Salary OCT	£360.00
21	Clerk – Salary NOV	£360.00
22	PGGM (2948) – Bus shelter window materials	£216.00
23	Argos – Printer ink; Tesco – Paper	£26.29
24a	PGGM (2963) – Digger hire (half day) Barracks	£69.60
24b	PGGM (2963) – Gravel 2-tonnes-Water End	£156.00
25	PGGM (2974) – Compost-Water End	£319.32
26	Clerk – Salary DEC	£360.00
27	Argos – Printer ink	£22.79
28	Hugo Fox – Website hosting	£143.86

.2 Budget update noted. Following some years of increasing the Precept to rebuild reserves, this achieved, the Budget and Year End comparison shows a surplus – year on year – above statutory and routine expenditure. The minutes of January 2024 record agreement to 'build reserves for project funding'.

i Allocated reserves are held for A30 / Water End traffic calming measures.

ii Newnham 900.

AGREED Unanimously a contribution of up to £5K towards Newnham 900 events, in the event this is needed should the Lottery funding bid not be successful.

.3 Draft budget & Precept request 25/26 Budget revised post meeting **APPENDIX III.**

AGREED Unanimously a Precept request of £13,614. The budget shows this to be sufficient to cover statutory and routine expenditure and allow for £5K as allocated above to Newnham 900.

This is an increase of 2% payable per household, though due to a small decrease in the base, an increase of 1.65% on the total Precept request.

Tax base for 2024/25 is 268.5

Tax base for 2025/26 is 267.1

£13,614 = tax base 267.1 x £50.97 (band D, increase £1) increase 2% per household.

Bearing in mind the figure will halved for band A and double for Band H properties.

Precept request form completed and signed for submission to BDBC by 31 January.

.4 Grant funding

TO RECORD THANKS

- i to County Cllr Elaine Still for grant of £500 from last year, and Ward Councillors for grant of £541 from this year, which combined to pay for Water End's raised bed planters;
- ii to County Collar Elaine Still for £1K grant from her devolved budget this year for restoration of second pond on Newnham Green (south pond).

For signature (p2 of 5)

.5 Parish Council mower

TO RECORD THANKS to Nick Walker for collecting, housing, and arranging repair.

AGREED Parish Council to cover cost of mower service, and gift the mower to Hook School; Hook is Newnham's catchment infant and junior school.

9 A30 AND WATER END – updates and reports

.1 Water End drainage works *update Paul Ghent and Pauline Hedges.* Works scheduled for six weeks took two months and 17 days. Not well planned with subcontractors. Long delays waiting for a water pump while the road closure was in place.

Impact on Iron Bull No communication from HCC Highways throughout. The impact on the pub felt to have been unnecessarily negative due to the layout of road closure barriers, and the full time closure of access between the A30 carriageways.

Water End Lane continues to flood due to blocked ditches, in the main along the north-east side bordering the field (owned by the Fosters and currently for sale). Ditches are landowner responsibility. During recent heavy rain, Water End Lane was under water for two days. From the south-west side, rainwater from Hodds Farm land comes via the football field (very well drained) – and cascades into the Lane. (There is also a requirement for the football field landowner to maintain their ditches.) Potential for Parish Lengthsman to help, the first task being to open the grips, to arrange site visit. Action ST.

.2 A30 traffic calming *update Clerk*

NOTED The road works – despite other negative impacts – operated a successful 40mph speed limit through Water End. Due to the visual impact of the traffic coning – and the 'chicane' route past the pub – the 40mph caused no apparent issues with traffic flow and significantly changed the perception of the area when driving through.

An email from the Clerk to local Highways Engineer on 17 November 2024 (copied to County Cllr Elaine Still) sought advice – and support – for a feasibility study via the Community Funded Initiative for long term traffic calming measures to replicate this effect. Response received that Highways would not support a reduction in the speed limit – not the question asked, but a statement of their position re speed limits.

Action item ongoing (ST)

.3 Andwell Lane bus shelter *update Clerk, Pauline Hedges.* The side window installed. The bus shelter sign to be relocated to the highways signpost.

.4 Water End raised planters *update Clerk, Pauline Hedges* Site levelled, membrane laid (PH), gravel and planters installed. Awaiting slabs to be laid and green waste collected.

10 HIGHWAYS & PARISH MAINTENANCE (NEWNHAM) – updates and reports

.1 Ditching *update Clerk*

i Barracks track – Saturday 14 December. Cleared common land ditch by Old School Road, Foster's Business Park entrance

ii Newnham Road – Sat 14 December. Dug out the holding ditch in Network Rail verge.

iii Newnham Green – 14 December – Lengthsman inspected, decided nothing useful to do. Grips open, ditches open and running. Summer task to widen the ditch on the corner of Newnham Lane. Needs to be dry to get onto the Green.

.2 Newnham highway / flooding update

Dec / Jan *update Clerk*

- Newnham Green – no flooding.
- Barracks track and Newnham Road near Kingsbridge – no flooding.
- Water running down Newnham Road from crossroads end to Newnham Road ponds. Some water lying at Newnham Road ponds but not covering the entire road
- (Flooding covering Ridge Lane further into Rotherwick – passable but quite deep.)
- The 30mph sign coming into Newnham on Ridge Lane (demolished by falling tree) has been replaced / re-erected).

Newnham Lane *update Sue Symons*

- Corner near Webbs Farm, water lying over half the road. Noted this not usual, a danger if freezes. To monitor, ST to report to HCC website. (Subsequent note that HCC resurfaced the Lane in this vicinity on 30th January.)
- Bottom of hill by the bridge – where it used to flood – presently fine.

For signature (p3 of 5)

.3 Summer Lengthsman tasks (providing the LM scheme is going ahead in 2025/26)

- Ditching as 10.1.iii above
- Strimming early June along Church Path – Newnham FP3 and onwards into Hook.

11 NEWNHAM GREEN – Clerk update**.1 One x Standard Elm *Ulmus Fiorente*** planted on the Green (with support from Earl of Malmesbury). Supplied by the Hampshire Forest Partnership **APPENDIX IV.**

The Hampshire Forest Partnership, via a grant from the Nature for Climate Fund, has supplied over 300 large standard trees – including disease resistant Elms – free of charge to communities for public open spaces; and also a stock of smaller ‘feathered’ trees and whips for landowners, other organisations, groups and individuals.

.2 Ponds and green maintenance – meeting with Pete West from HIWARG 19 January.

Pond maintenance notes supplied at **APPENDIX V.**

Pond North (main pond) Ongoing work to counter the *Crassula* thwarted last year by wet weather. To remove the *Crassula* it as to be dry, as any fragment left will disperse in the water and create a new plant.

Pond (south) (by crossroads) **restoration project** advice from HIWARG re possible methods and time, and ecologist recommendations.

NOTED 1. Newnham Parish Council is responsible for the management of Newnham Green. The Parish Council has a rolling contract with the Malmesbury Trust to mow and maintain the Green and maintain the ponds. The Malmesbury Trust has responsibility for the Trees.

.3 Green preparation for Newnham 900 Main Green

- Programme of cut and collect plus one scarify prior to event (timing subject to weather and ground conditions).
- Noted the 900 committee would like to see the Main Green rolled – for discussion.

.4 Green maintenance plan

AGREED To draw up a revised Green maintenance plan. Action ST.

12 PLANNING – updates and reports**.1 Parish planning & tree applications** **APPENDIX VI** Noted, no further discussion.**PLANNING UPDATES****.2 New NPPF & BDBC Local Plan Update** (Return to requirement for 5-year land supply)

- Dec 2024 NPPF reinstates five-year land supply requirement with immediate effect; plus a 20% buffer – ie six years – where there has been significant under-delivery of housing over the previous three years. BDBC’s Authority Monitoring Report (AMR) of Dec 2024 showed a land supply of 4.2 years against the published 01 April 2024 Standard Method figure of 828 dwellings per annum.
- New Standard method requirement to build 1,127 new houses each year during Local Plan period to 2040 – an extra c4.5K dwellings.
- Emails from Cllr Andy Konieczko **APPENDIX VII.I.**
- New Call for Sites launched on Monday 06 January to 5pm Monday 17 February.
- Open letter from Whitchurch to Andy Konieczko dated 11 Jan calling on BDBC to continue to Reg 19 by 11 March under transitional arrangements and with additional sites. **APPENDIX VII.II.**
- An indication from Ward Cllrs that BDBC is looking if possible to continue with existing Local Plan Update so have Policies in place, incl those unrelated to the spatial strategy.

.3 New NPPF and Hart Local Plan – Adopted Local Plan is five years’ old on 30 April.

Up to 30 April, the Local Plan’s adopted housing figure of 432 per annum up to 2032 (based on old Standard Method figures) still applies (ref NPPF para 78) and so Hart continues until 30 April to be able to show a five-year-plus land supply. (Due to over-supply to date, a present 8.7 yr land supply.) Legal requirement for Review process to be initiated by the five-year date. From that date – 30 April 2025 – Hart’s Local Plan will be subject to the Dec 2024 NPPF and Standard Method’s increased housing figures. Initial calculations showed that figure to be 742 per annum, at which point Hart will lose its five-year land supply.

For signature (p4 of 5)

Hart Cabinet meeting of 02 Jan formally approved launch of a full Local Plan Update. An Update schedule (*Local Development Scheme*) to be published shortly.

But to note the LPU process itself won't start immediately – c 3-6 month's Plan prep first – putting team in place, investigating/purchasing new software, preparing a project plan document.

.4 Oakdown Farm M3J7 – Warehousing application

23/03120/FUL Application for Storage and distribution units etc (use class B8)

Approved by majority DC 06 November meeting.

Officer recommendation for Approval subject to Legal Agreement.

Very strong opposition from local Parish Councils, local Councillors and Community Groups, plus 344 public objections.

Other Statutory Consultees presented little outright objection: Historic Environment (Conservation) continued to express concerns; Landscape, Biodiversity, Tree officers, Urban Design, Environmental Health, Hampshire Highways, National Highways – all indicate that issues raised have been in the main addressed or can be dealt with via condition.

Noting that this site included for commercial development in the Reg 18 Draft Local Plan.

.5 Moto M3J6 – MSA application

17/03487/FUL (Validated 02 Nov 2017) Construction of Motorway Service Area

Amended proposals and responses continue. Most recent consultation to 04 December on Hydrogeological Risk Assessment required by EA. At Jan 25 - Ongoing comment from Winslade, EA, LLFA(HCC), National Highways. EA: 'The submitted letter does not satisfactorily meet our earlier request for further information' LLFA requesting further info... re culvert. National Highways also say proposals need amending

.6 Hackwood Park proposals for conversion to hotel **APPENDIX VIII**

13 FURTHER UPDATES

.1 PCC Round Table meeting of 20 January (held in North Waltham) *Report Pauline Hedges*

- Three key new priorities for Police & Crime Plan – Shoplifting, Roads safety, Rural crime.
- Re traffic speed though rural Villages, parishes might be able to contribute to installation and running costs of speed cameras, though details to be worked through, splitting costs between county, police and parish.
- PCC Donna Jones is funding two more speed vans – all speed vans work across the county and are focussed on high risk routes, prioritised to the routes that have accidents recorded.
- Re the pending devolution, Donna said that the function of PCC (Police and Crime Commissioner) is likely to be exercised by a deputy mayor, as such will be tied to mayoral elections.

.2 Old Basing Parish Council meeting of 05 November – *Report Pauline Hedges*

- i MOTO Motorway Service Area application site is in Old Basing Parish – Old Basing Parish Council continues to oppose.
- ii Old School Neverland festival is planned again for this year, but over just two days 16, 17 August thus avoiding the August bank holiday. Old Basing reported noise and disruption from people driving around after festive. Noting that traffic management is part of the licence requirements. Crown Lane, Pot Lane and Water End Lane all supposed to be closed; the organisers failed to provide adequately for the closure of Water End Lane on the first day and not at all after that.

.3 Support for Hampshire's Farmers from Borough and County Councils

Newnham Parish Council submitted request to Ward Cllrs to support a motion to BDBC Full Council meeting of Thurs 19 Dec – to officially oppose new inheritance tax laws for family farms, to the Secretary of State. BDBC agreed by majority;

HCC Full Council meeting of 28 November supported a similar motion.

.4 Outcome of HCC Future Service Provision consultation and cuts. **APPENDIX IX**

14 PARISH COUNCIL MEETING DATES 2025

Tuesdays 7pm Clubroom – 25 March, 20 May AGM, 15 July, 16 Sept, 18 Nov.

Parish Assembly, Monday 07 April, 7pm in the Clubroom with refreshments.

Meeting close 9.45pm with thanks to all

APPENDIX I Devolution and Local Government Reorganisation

1.

To separate the two concepts – both of which are required by Government:

- i **'Devolution'** – ie 'all parts of England are to be part of regional Strategic Authorities with an elected Mayor'
- ii **'Local Government Reorganisation'** which will abolish the two-tier structure of County and District so all authorities are Unitary, and require existing smaller unitaries to be part of a larger entity.

2

Devolution proposals:

- i A 'Hampshire & Solent' Combined Authority which will include areas presently covered by Hampshire County Council – which is all two-tier – and Southampton and Portsmouth City Councils and the Isle of Wight which are each separate Unitary Councils.
- ii All parties agreed to submit a request to be included in the Government's Priority devolution programme. HCC agreed at its Full Council meeting on Thurs 09, Cabinet of Fri 10, and the joint request was submitted by the deadline of Fri 10th.

Part of the rationale for this is that it will enable 'Reorganisation' to come (a bit) later.

- a With this request comes agreement that County Council elections scheduled for May 2025 will be postponed for a year, and that the Combined Authority will submit its plans for Local Government Reorganisation (into Unitary Councils) by Autumn this year.
- b Government will announce those on the Priority programme by the end of January.
- c If Hants & Solent has been accepted, the postponement of elections will be confirmed, Government will publish a six-week consultation in February.
- e The aim is for the Combined Authority to be in place by April 2026 and Mayor elected May 2026.

The Combined Authority will have a seat on the Council of Regions & Nations, will have access to long term strategic funding, will have strategic responsibility for – transport & local infrastructure; housing & strategic planning; education, skills & employment support; economic development & regeneration; health & public services; environment and climate change; public safety & emergency services.

3.

Local Government Reorganisation

- i Within the new 'Hampshire & Solent' combined authority, new Unitary Councils must be organised. If the priority Devolution for Hants & Solent goes ahead, then proposals for the new Councils must be submitted to Government by Autumn 2025 (as 2.ii.a above).
- ii This is the big unknown and all up for debate.
- iii According to the White Paper, Unitaries should comprise 500K to 1.2M people.
 - As such the area of HCC is too big to be one Unitary Authority.
 - But no councillors seem to support 500K to 1.2M – all think is far too big.
- iv White Paper also says that 'existing District/Borough boundaries should be retained as much as possible when creating new Unitary Councils...'
 - Bearing in mind Gov is pushing through a planning reorganisation based on the current LPA (Local Planning Authority) structure.
 - It has been suggested that a 'Hampshire Unitary' might include Hart, Rushmoor, Basingstoke & Deane, East Hampshire, and Test Valley.
(This would be similar to the 'Heart of Hants' Unitary discussed in 2016, except the 2016 version included New Forest and not E Hants.)
- v White Paper ambitious timescale that Unitary Council elections would take place in May 2026 – or May 2027 with expected shadow periods of operation.

4.

The White Paper mentions Parish Councils twice – but doesn't say very much:

- 'We will also work with the town and parish council sector to improve engagement between them and local authorities.'
- 'We will also rewire the relationship between town and parish councils and principal Local Authorities, strengthening expectations on engagement and community voice.'

APPENDIX II.I


NEWNHAM PARISH COUNCIL INCOME 2024/25 - 22 JAN

Balance brought forward 1st April 2024									£17,468.94
Date	Item	Precept	BDBC Grass cutting grant	Other grant	LM income	Vat 2022-24	Vat (LM) 2022-24	Bank Interest	Total Receipts
30/04/24	Parish Precept 6 months	£6,708.00							£6,708.00
30/04/24	BDBC Grass Cutting Grant		£351.93						£351.93
26/06/24	BDBC Ward Cllr Community-planters			£541.00					£541.00
26/06/24	HCC contribution to external audit				£210.00				£210.00
01/08/24	VAT Reclaim 2022/23 (PC)					£169.25			£169.25
01/08/24	VAT Reclaim 2022/23 (LM)						£250.00		£250.00
01/08/24	VAT Reclaim 2023/24 (LM)						£3,000.00		£3,000.00
01/08/24	VAT Reclaim 2023/24 (PC)					£341.34			£341.34
23/09/24	Parish Precept 6 months	£6,708.00							£6,708.00
01/08/24	VAT Reclaim 2024/25 (PC)					£202.96			£202.96
2024-25	Bank Interest							£227.80	£227.80
	Total	£13,416.00	£351.93	£541.00	£210.00	£713.55	£3,250.00	£227.80	£18,710.28
									£18,710.28
			Interest	April	£10.54				
	RECEIPTS & PAYMENTS SUMMARY			May					
	Bal brought forward 1st April 2024	£17,468.94		Jun					
	Plus income	£18,710.28		Jul					
	Minus expenditure	£7,778.15		Aug					
	Balance	£28,401.07		Sept					
	BANK RECONCILIATION			Oct					
	bus instant access	£21,617.40		Nov					
	Treasurers	£33.67		Dec					
	95-day notice account	£10,000.00		Jan					
	Minus LM funding remaining	£3,750.00		Feb					
	PLUS LM VATnot claimed 2024/25	£500.00		Mar					
	Balance	£28,401.07							
	PC VAT to claim	£158.98							
	Income pending – County cllr grant	£1K							

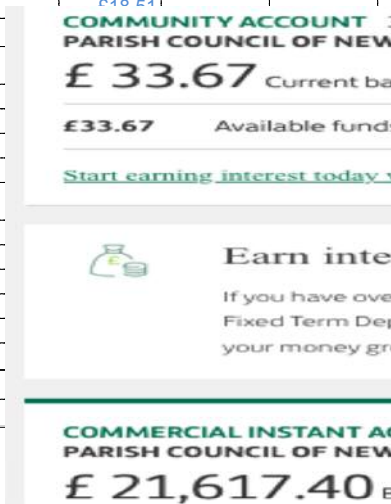
COMMUNITY ACCOUNT
PARISH COUNCIL OF NEW
£ 33.67 Current balance

£33.67 Available funds

Start earning interest today



Earn interest
If you have over
Fixed Term Deposit
your money grows



NEWNHAM PARISH COUNCIL - EXPENDITURE 2024/25 - 22 JAN

No	Inv date	Date paid	Supplier	Description	Finance / Governance	Salary	Expenses	Community	Villager	GREEN	Maintenance	Project	VAT	Total
1	02/04/24	31/05/23	Kieren Parkes	WE -Planter								£600.00		£600.00
2	08/04/24	31/05/23	HALC	HALC & NALC subs	£314.00									£314.00
3	April	28/04/24	Clerk	Salary APRIL		£360.00								£360.00
4	May	01/06/24	Clerk	Salary MAY		£360.00								£360.00
5	24/05/24	24/05/24	STHayes & Finch Ltd	D-day candles				£70.83					£14.16	£84.99
6	06/05/24	01/06/24	BHIB	Insurance (2nd yer tie-in)	£427.92									£427.92
7	29/05/24	09/06/24	GoDaddy	Domain renewal-12months	£23.20								£4.64	£27.84
8	07/06/24	10/06/24	Villager	Print and Ed contrib 2024/25					£854.00					£854.00
9	07/06/24	10/06/24	Villager	Colour for centre spread June					£45.45					£45.45
10	14/06/24	14/06/24	Pomona Fruites	Veg Truck x 3								£492.39	£98.46	£590.85
11	June	01/06/24	Clerk	Salary JUNE		£360.00								£360.00
12	27/06/24	18/07/24	Peter Brown	Intenral audit	£75.00									£75.00
13	July	27/07/24	Clerk	Salary July		£360.00								£360.00
14	AUGUST	29/08/24	Clerk	Salary AUG		£360.00								£360.00
15	18/09/23	20/09/23	BDO LLP	Extenal Audit	£210.00								£42.00	£252.00
16	SEPT	28/09/24	Clerk	Salary SEPT		£360.00								£360.00
17	10/10/24	16/10/24	Paul Beevers	300x wildPrimroses(compost)						£50.00				£50.00
18	22/10/24	22/10/24	PGGM - 2874	Green cut pond & E triangle						£112.50			£22.50	£135.00
19A	13/10/24	24/10/24	Terrain Tyres	Mower new tyres x 2							£80.42		£16.08	£96.50
19B	19/10/24	24/10/24	Micheldever Tyres	Mower inner tubes							£25.62		£5.12	£30.74
20	OCT	24/10/24	Clerk	Salary OCT		£360.00								£360.00
21	NOV	27/11/24	Clerk	Salary NOV		£360.00								£360.00
22	09/12/24	09/12/24	PGGM - 2948	Bus shelter window materials							£180.00		£36.00	£216.00
23a	10/12/24	10/12/24	Argos	Printer ink				£18.99					£3.80	
23b	10/12/24	10/12/24	Tesco	Paper				£2.92					£0.58	£26.29
24a	18/12/24	18/12/24	PGGM - 2963	Digger hire - Barrcks							£58.00		£11.60	£69.60
24b	18/12/24	18/12/24	PGGM - 2963	Gravel 2-tonnes-Water End								£130.00	£26.00	£156.00
25	23/12/24	23/12/24	PGGM - 2974	Compost								£266.10	£53.22	£319.32
26	DEC	23/12/24	Clerk	Salary DEC		£360.00								£360.00
27	30/12/24	30/12/24	Argos	Printer ink				£18.99					£3.80	£22.79
28	09/01/25	09/01/25	Hugo Fox	Website hosting	£119.88								£23.98	£143.86
			TOTALS		£1,170.00	£3,240.00	£0.00	£111.73	£899.45	£162.50	£344.04	£1,488.49	£361.94	£7,778.15
														£7,778.15
	Inv date	Date paid	Supplier	Description	Finance / Governance	Salary	Expenses	Community	Villager	GREEN	Mainten-	Project	VAT	Total

APPENDIX II.II

Page 1 of 2

Entry Date	Value Date	Description	Transaction Reference	Entries	Balance
29-Nov-24		—BALANCE BROUGHT FORWARD—		10,029.29 CR	
29-Nov-24	2-Dec-24	Interest Payment		3.14 CR	10,032.43 CR
2-Dec-24	3-Dec-24	Interest Payment		0.98 CR	10,033.41 CR
3-Dec-24	4-Dec-24	Interest Payment		0.98 CR	10,034.39 CR
4-Dec-24	5-Dec-24	Interest Payment		0.98 CR	10,035.37 CR
5-Dec-24	6-Dec-24	Interest Payment		0.98 CR	10,036.35 CR
6-Dec-24	9-Dec-24	Interest Payment		2.94 CR	10,039.29 CR
9-Dec-24	10-Dec-24	Interest Payment		0.98 CR	10,040.27 CR
10-Dec-24	11-Dec-24	Interest Payment		0.98 CR	10,041.25 CR
11-Dec-24	12-Dec-24	Interest Payment		0.98 CR	10,042.23 CR
12-Dec-24	13-Dec-24	Interest Payment		0.98 CR	10,043.21 CR
13-Dec-24	16-Dec-24	Interest Payment		2.94 CR	10,046.15 CR
16-Dec-24	17-Dec-24	Interest Payment		0.98 CR	10,047.13 CR
17-Dec-24	18-Dec-24	Interest Payment		0.98 CR	10,048.11 CR
18-Dec-24	19-Dec-24	Interest Payment		0.98 CR	10,049.09 CR
19-Dec-24	20-Dec-24	Interest Payment		0.98 CR	10,050.07 CR
20-Dec-24	23-Dec-24	Interest Payment		2.94 CR	10,053.01 CR
23-Dec-24	24-Dec-24	Interest Payment		0.98 CR	10,053.99 CR

Eligible deposits with us are protected by the Financial Services Compensation Scheme (FSCS). We are covered by the Financial Ombudsman Service (FOS). Please note that due to FSCS and FOS eligibility criteria not all business customers will be covered. Lloyds Bank plc. Registered Office: 25 Gresham Street, London EC2V 7HN. Registered in England and Wales no. 2065. Telephone: 0207 626 1500. Authorised by the Prudential Regulation Authority and regulated by the Financial Conduct Authority and the Prudential Regulation Authority under registration number 119278.

Page 1 of 2



COMMERCIAL BANKING

Entry Date	Value Date	Description	Transaction Reference	Entries	Balance
24-Dec-24	27-Dec-24	Interest Payment		2.94 CR	10,056.93 CR
27-Dec-24	30-Dec-24	Interest Payment		2.94 CR	10,059.87 CR
30-Dec-24	31-Dec-24	Interest Payment		0.98 CR	10,060.85 CR
31-Dec-24		CLOSING BALANCE			10,060.85 CR

APPENDIX III – BUDGET UPDATE – REVISED POST MEETING

YEAR END COMPARISON		NEWNHAM PC – ACCOUNT SUMMARY @ 28 JAN 2025			Expend to date v budget - funds remaining	24/25 BUDGET DRAFT (MAR 24)	25/26 BUDGET DRAFT (JAN 2025)
2022/23 Year End	2023/24 Year End	NEWNHAM	2024/25 TO DATE	LATEST EST JAN			
		INCOME					
£12,525.00	£12,900.00	Precept	£13,416.00	£13,416.00		£13,416.00	£13,614.00
	£1,000.00	Grant (other)					
£348.45	£351.93	Grass cutting grant	£351.93	£351.93		£369.46	£351.93
£413.00	£500.00	County Cllr grant	£1,000.00	£1,000.00			
£1,500.00	£450.65	Ward Cllr grants	£541.00	£541.00			
£36.35	£239.45	Interest	£227.80	£250.00		£170.00	£250.00
		Returned funds					
£200.00	£200.00	LM income for audit	£210.00	£210.00		£200.00	£210.00
£421.27		VAT reclaim (PC)	£713.55	£872.53			
		VAT reclaim (LM)	£3,250.00	£3,250.00			
£15,444.07	£15,642.03	Total Income	£19,710.28	£19,891.46		£14,155.46	£14,425.93
		EXPEND					
£216.00	£324.00	Clerk allowance	£324.00	£324.00		£324.00	£324.00
	£50.00	Assembly Expenses		£150.00	£100.00	£100.00	£100.00
£946.69	£1,087.72	Finance/Governance	£1,170.00	£1,324.88	£80.00	£1,250.00	£1,350.00
		Training			£200.00	£200.00	£200.00
£4,320.00	£4,320.00	Salary	£3,600.00	£4,608.00		£4,752.00	£4,896.00
		Capital					
£1,110.56	£782.65	Maintenance	£644.04	£800.00	£155.96	£800.00	£800.00
		Clubroom					
		PROJECTS'			£9,399.78	£11,000.00	
		A30/ gateways					£15,000.00
£154.49	£113.21	Community	£111.73	£111.73			
£933.23	£1,000.00	Newnham 900					£5,000.00
	£552.75	Project-Green					£1,000.00
		Project - planters	£1,092.39	£1,092.39			
		Water End garden	£396.10	£396.10			
£1,304.42	£386.18	Green Maintn	£162.50	£1,500.00		£1,500.00	£1,500.00
£678.49	£854.00	Villager	£899.45	£899.45	£100.55	£1,000.00	£1,000.00
£770.19	£3,341.34	VAT	£361.94	£361.94			
£10,434.07	£12,811.85	Total Expenditure	£8,762.15	£11,568.49		£20,926.00	£31,170.00
£5,010.00	£2,830.18	SURPLUS/DEFECIT	£10,948.13	£8,322.97		£6,770.54	£16,744.07
£14,638.76	£17,468.94	BALANCE TO T/O	£28,417.07	£25,791.91		£10,698.40	£9,047.84
22/23 Year End	23/24 Year End		2024/25 TO DATE	2024/25 LATEST EST SEPT		24/25 BUDGET DRAFT (MAR 24)	25/26 BUDGET DRAFT (JAN 2025)
		NEWNHAM					

ALLOCATED RESERVES 2024/25	
Contingency/working bal	£13,416.00
A30 traffic calming fund	£12,375.91
TOTAL	£25,791.91

APPENDIX IV NEWNHAM GREEN ELM

The Hampshire Forest Partnership has been successful in achieving a grant from the Nature for Climate Fund enabling it to supply over 300 large standard trees free of charge to communities for public open spaces, and also a stock of smaller 'feathered' trees and whips for landowners, other organisations, groups and individuals.

The standards include disease resistant Elm (*Ulmus*) of three different variants; *New Horizon*, *Rebona* and *Fiorente*. The smaller 'feathered' Elms are *Ulmus Ademuz*.

All these trees have been bred to resist Dutch Elm disease and be robust in the face of Climate Change. They also, on achieving maturity, host the endangered White-letter Hairstreak butterfly.

'In bringing these majestic trees back to the Hampshire landscape the scheme seeks also to help redress tree loss and declines in biodiversity.'

Newnham Green has a standard *Ulmus Fiorente*.



HAMPSHIRE FOREST PARTNERSHIP
a legacy in leaves

About us Get involved News and events Contact us

WHAT IS THE HAMPSHIRE FOREST PARTNERSHIP

The Hampshire Forest Partnership has been set up so communities can get involved in caring for our woodlands and planting more trees. There are lots of ways you can support the countryside, like volunteering or holding your own tree planting event. With your help we're sure to reach our goal of planting one million trees by 2050.





JOIN THE MILLION TREE CHALLENGE!

Help us reach our goal to plant one million trees and add your trees and hedge planting to our online map.



SPONSOR A TREE

Whether you are an individual or a business, please support us to plant more trees in Hampshire and help our wildlife to thrive.



HELP US BRING BACK THE MAJESTIC ELM TREE

We are trialling the planting of disease resistant elms. We can provide you with the trees at no cost, we just ask you to tell us exactly where you will plant them and allow us to monitor how successful they are.



ABOUT US

Find out how we are supporting Hampshire's tree population and making the county a greener place to live.

[Find out more](#)



GET INVOLVED

If you're a parish council, business, teacher, landowner, land manager or farmer with land that would be perfect for tree planting, we'd love to hear from you.

[Find out more](#)



NEWS

Our forest is always growing. With so much going on across Hampshire, find out more about our latest projects and tree planting events.

[Find out more](#)

APPENDIX V NEWNHAM GREEN PONDS

POND MAINTENANCE REVIEW

From: "amphibians@hiwarg.org.uk" <amphibians@hiwarg.org.uk>

Subject: For Parish Council meeting next week

Date: 22 January 2025 at 01:02:48 GMT

Background on how HIWARG can help As volunteers HIWARG can offer advice and manual support for some types of tasks. We do have public liability insurance so are covered for our volunteer events, but do not have indemnity insurance that commercial ecologists would have. This means that we can take on low risk manual management of some sites, but if vehicles, large scale habitat management or protected species licences or mitigation is needed you would need to employ the services of a commercial ecologist.

Although I am licensed to survey for great crested newts (GCN), this is just for disturbing GCN during surveys and not for supervising works of any kind. Should you need to employ the services of an ecological consultant for the work on the southern pond I can suggest either of the following ecologists who have years of experience of working with GCN:

Pond management options at Newnham Green

1. The main pond (Newnham Green North Pond)

This is a difficult pond to work on as there are two conflicting legal restrictions. As well as the presence of GCN and their levels of protection, there is also a scheduled invasive species *Crassula helmsii*.

i The presence of GCN mean that for low impact manual work, we need to carry out any tasks when either the pond is in a dried out state or when GCN are less likely to be encountered; GOV.UK recommend between the start of November to the end of January, but if GCN are found then the work must stop, unless covered by a site licence supervised by a commercial ecologist.

ii. The presence of the invasive non native plant, *Crassula helmsii* means that we need to tackle this when the pond is dry. This works well if we can muster enough volunteers and the pond is dry in the summer, so we can avoid GCN and tackle the plant. Unfortunately we had scheduled work in August this year but heavy rains at the start of the month raised the water levels above the *Crassula* ending our plans for the year. We will plan again for this task in the summer. It would be very beneficial if we can encourage residents to join in on the activity, for which I can provide guidance etc.

1. The pond by the Crossroads (Newnham Green South Pond) is very shallow, has a lot of willow growth and has had low levels of GCN breeding in the past. HIWARG can offer to manually clear the accumulated silt and leaf litter within the recognised government guidance between Nov and Jan

www.gov.uk/guidance/great-crested-newts-protection-surveys-and-licences#pond-management

As thankfully there is no *Crassula* in this pond, we can work on the pond even if water is present, however if we encounter GCN at any point we would need to cease the activity as per government guidance. If you wanted to use machinery or for the works to continue with minimum interruption you would need to employ the services of a commercial ecologist, who can apply for a conservation licence and will be able to proceed under the terms of the licence.

3. The third pond by Tithe Barn (Newnham Green East Pond) doesn't currently need much maintenance, but we can monitor this over the year should you need any help with this in the Autumn/Winter.

Pete West

Amphibian Officer

Hampshire & Isle of Wight Amphibian & Reptile Group (HIWARG)

<https://groups.arguk.org/hiwarg>

APPENDIX VI – NEWNHAM PARISH PLANNING UPDATE 08 DECEMBER

24/02978/ROC (Validated 20 Dec 2024) Variation of Condition 1 and discharge of condition 4 of 22/02643/FUL - (Erection of 1 no. dwelling with associated landscape and parking) - Addition of rooflights dormer window, additional rooms in roof, elevational changes and change to site layout (part retrospective).

24/02813/LBC (Validated 09 Dec 2024) Elm Cottage, Ridge Lane. Installation of replacement front door and door frame.

T/00611/24/TCA (Approve 07 Jan, Validated 02 Dec 2024) Newnham Lodge, Tylney Lane. Multi-stem laurel, reduce by 2/3m. Liquid Amber, reduce by 2/3m and attach brace. 5x Holly, reduce to 6ft.

24/02797/FUL and 24/02798/LBC (Validated 29 Nov 2024) Newnham House, Ridge Lane. The formation of a separate dwelling and extension to the Coach House, with the creation of associated amenity space, car parking and other infrastructure

T/00578/24/TCA (Approve 07 Jan, Validated 19 Nov 2024) Tithe Barn, Ridge Lane. T1 Bay, fell to ground level.

T/00560/24/TCA (Approve 23 Dec, Validated 12 Nov 2024) Tally-Ho, Newnham Road. A Damson trees: Approx 12 to 13m tall. Lateral crown reduction by up to 3m. B1. Apple tree: approx 5m tall. Crown reduce by 1m and remove broken branch. B2. Apple tree: approx 12-13m tall. Crown reduce by 1.5 and light thinning. Removal dead branches. C. Pear tree: approx 12-13m tall. Crown reduce by 3m, remove deadwood and Ivy.

24/02561/ROC (Grant 16 January Validated 08 Nov 2024) Land At Blackstocks Lane. Variation of Condition 1 [change to approved plans, involving additional sixth bedroom in roof with gable and roof light]; removal of condition 17 and additional information to satisfy conditions 2, 3, 14 and 16 of 24/00715/FUL (erection of 1no. dwelling with associated garage, landscaping and a new access (part retrospective))

24/02494/HSE (Grant 16 December, Validated 31 Oct 2024) Newnham Lodge, Tylney Lane. Erection of a two-storey front/side extension following partial demolition of existing extension. Removal of porch and reduction in height of front bay.

T/00521/24/TCA (Approve 03 Dec, Validated 29 October) Jasmine Cottage, The Barracks. T1 Willow. Remove dead crossing branches, reduce height by 6m leaving a finished height of 12m.

24/02342/HSE (Grant 28 November, Validated 14 Oct 2024) Crown Lodge Crown Lane. Conversion of detached garage to form ancillary residential annexe.

T/00511/24/TPO (Approve 09 Dec, Validated 14 Oct) Middlewood, 7 The Baredown. T1 Horse Chestnut, reduction.

24/02271/FUL (Refuse 28 November, Validated 03 Oct 2024) Collingwood, Newnham Road. Erection a 1.8m high closeboard fence on the repositioned west boundary and change of use of land to residential.

T/00474/24/TCA (Pending 24 September) Newnham Lodge Tylney Lane. Acacia tree: fell and remove stump.

T/00417/24/TCA (Approve 01 Oct, Validated 19 Aug) Elm Cottage, Ridge Lane. Fell 1 dead/dying Norway Maple.

24/00882/LBC (Pending, Validated 16 Apr 2024) Nightingale Cottage, Heather Row. Demolition of existing south entrance porch, changes to fenestration, and erection of new porch with access ramp in revised position. Alterations to existing conservatory and replacement of glass roof with tiled roof. Various internal and external alterations.

24/00712/FUL (Grant 10 Oct, DC 09 Oct, Validated 26 Mar 2024) Land East Of Naishes Barn) Erection of agricultural barn with hard surface apron and extended access track.

23/02722/FUL (Pending 02 Nov 2023) Land East Of Keepers, London Road Nately Scures. The erection of 3no. detached dwellinghouses together with associated new access, car parking, drainage and hard and soft landscaping.

MOTO MSA (OLD BASING PARISH)

17/03487/FUL (Pending Validated 02 Nov 2017) Land Adjacent to Junction 6 M3

Construction of a new Motorway Service Area (MSA) to comprise an amenity building, lodge, drive thru coffee unit, associated car, coach, motorcycle, caravan, HGV and abnormal load parking, and a fuel filling station with retail shop, together with alterations to the adjoining roundabout on the M3 and slip roads to form an access point and works to the highway. Provision of landscaping, infrastructure and ancillary works.

A further response from EA dated 17 September **APPENDIX II** re request for more detailed data in the applicant Hydrogeological risk assessment. Further monitoring Consultation to 04 December on Hydrogeological Risk Assessment. Jan 25 - Ongoing comment Winslade, EA, LLFA, Nat Highways. EA are continuing to object... 'The submitted letter does not satisfactorily meet our earlier request for further information'. LLFA also continue requesting further info... re culvert. National Highways also say proposals need amending.

DUMMER – WAREHOUSING APPLICATION J7

23/03120/FUL (Approved by majority DC 06 November, Validated 19 Dec 2023) Land At Oakdown Farm, Winchester Road. Demolition of three dwellings, outbuildings etc and construction of storage and distribution units... etc. (Note, included in Reg 18 Local Plan for Warehousing.)

APPENDIX VII.I NEW NPPF, STANDARD METHOD, AND LOCAL PLAN UPDATE

(Back to requirement for 5-yr land supply+20%)

- Dec 2024 NPPF reinstates five-year land supply requirement with immediate effect; plus a 20% buffer – ie six years – where there has been significant under-delivery of housing over the previous three years. BDBC's Authority Monitoring Report (AMR) of Dec 2024 showed a land supply of 4.2 years against the published 01 April 2024 Standard Method figure of 828 dwellings per annum.
- New Standard method requirement to build 1,127 new houses each year during Local Plan period to 2040 – an extra c4.5K dwellings.
- BDBC's update emails from Cllr Andy Konieczko.
- New Call for Sites launched on Monday 06 January to 5pm Monday 17 February..
- Open letter from Whitchurch to Andy Konieczko dated 11 Jan calling on BDBC to continue to Reg 19 by 11 March under transitional arrangements and with additional sites.

APPENDIX VIII.II

BDBC update from Cllr Andy Konieczko, Cabinet Member for Strategic Planning & Infrastructure, emailed to all Parishes on 13 December

'Government has imposed a higher housing number on our borough as part of its changes to the national planning rules. We've been told that we must build 1,127 new houses each year during our next Local Plan period, up from 828 previously. This means finding space for around 4,500 more properties – on top of the 12,500 or so that we were already being asked to build over the 15-year lifespan of the next Local Plan.

'While we support Government's ambition to make homes more affordable, we don't agree that forcing councils to increase housing targets will achieve this aim. We've robustly told Government this on many recent occasions – through our official response to its consultation on the new planning rules; at meetings with the Ministry of Housing, Communities and Local Government; in discussions with our MPs; and through our partnerships with other councils – and are frustrated that it hasn't listened.

'We're unable to proceed with finalising the draft Local Plan we've been developing over the past 18 months and which went out to public consultation earlier this year. We've made it clear to the government that we wanted to finalise it as soon as possible so that our borough is protected from unwanted speculative development. It now appears that we'll have to go back a few stages to make sure that our Plan complies with the new rules.

'We'll continue to study the detail of all of the documentation over the next few days... to understand exactly what our options are...'

THE WAY FORWARD AND A NEW CALL FOR SITES

Further email update of 20 December...

'We don't believe that this new higher target is right for our borough, but it looks like we have little choice but to accept it; the Government has made it clear that it'll step in if progress isn't made.

'Our focus is therefore on moving as quickly as we can – the sooner we get a new Local Plan, the sooner we'll get protection from speculative developers.

'We'll be working over the new couple of weeks to prepare a call for sites that we'll launch on Monday 6 January 2025. This will ask developers and landowners to come forward with land that could, potentially, be included in the Plan for future development. Submissions involving brownfield land will be particularly encouraged. The submissions that we receive will then be assessed in terms of whether they are suitable for future development.

'Over the coming weeks, we'll clarify how we aim to progress with our Local Plan and start setting out a timeline to move forward under the new NPPF.'

APPENDIX VII.II OPEN LETTER

TOWN HALL
NEWBURY STREET
WHITCHURCH
HAMPSHIRE
RG28 7DW



WHITCHURCH TOWN COUNCIL

Telephone: 01256 892107

Email: assistantclerk@whitchurch-hampshire-tc.gov.uk

Cllr Andy Konieczko

Basingstoke and Deane Borough Council

Dear Cllr Konieczko

NPPF and Borough Local Plan Update

Thank you for your correspondence including your letter of 20 December 2024. This has been considered by the Neighbourhood Plan Review Group at their meeting on 2 January 2025 and the Town Council's Development Committee at its meeting on 6 January 2025. We wholeheartedly agree with your objective of finalising the Local Plan Update as quickly as possible, recognising the new NPPF and protecting our communities from speculative development.

This can be achieved by the Council adopting a pre submission Regulation 19 Local Plan before 12 March 2025 and following it with a Main Modification drawing on the imminent Call for Sites prior to an examination in public before 11 May 2026. This would be completely consistent with paragraph 237 of the Annex to the NPPF entitled Implementation, footnote 82 to the NPPF and the Procedure Guide for Local Plan Examinations (August 2024).

We urge you to follow this obvious and legitimate route and avoid wasting the work of the last five years and weakening the ability of all communities to resist harmful speculative development. Consequently, we are copying this letter to all local Councils in the Basingstoke Parishes Coalition.

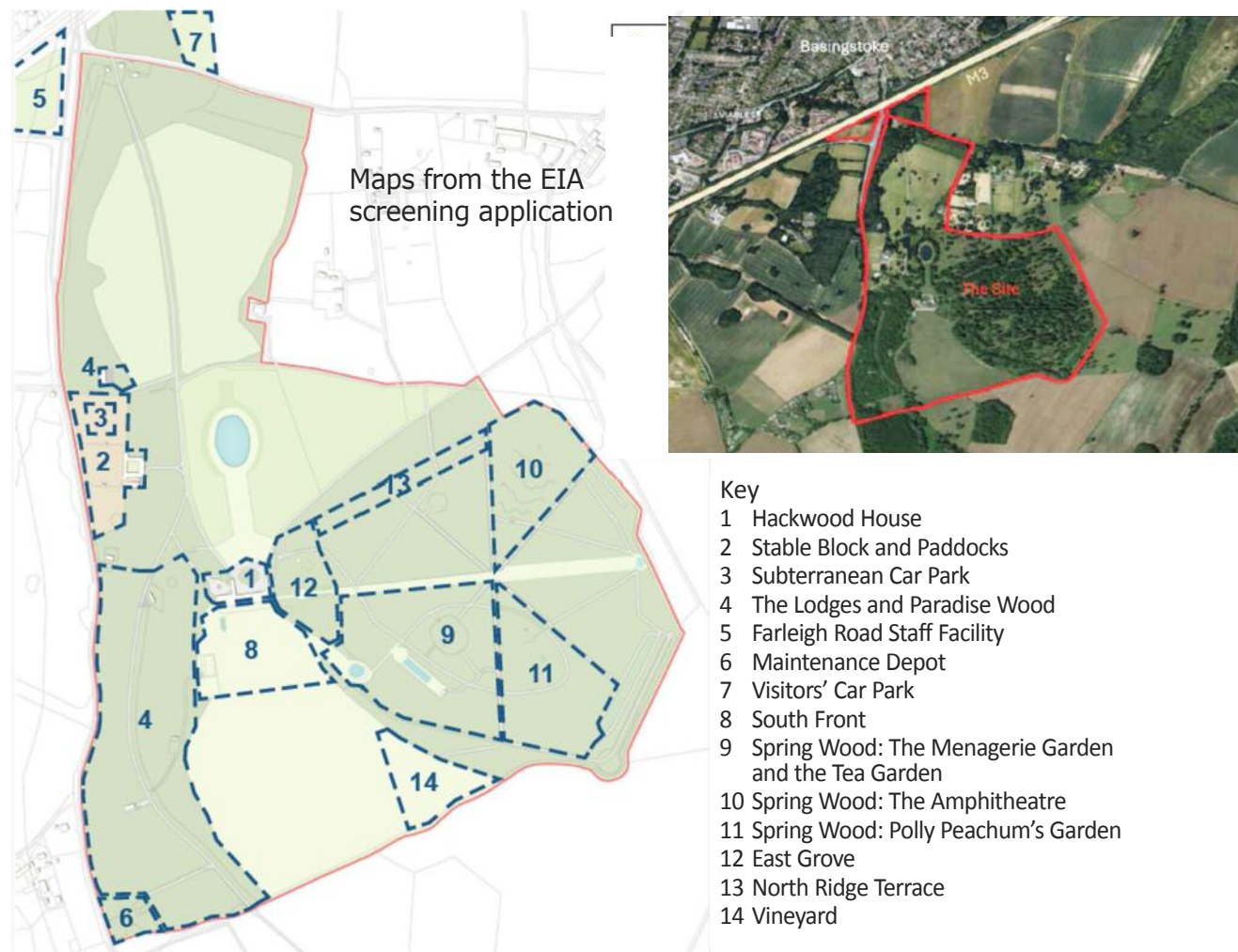
Yours sincerely, Suzie McGann, Assistant Town Clerk

APPENDIX VIII – HACKWOOD PARK ESTATE (WINSLADE)

PROPOSALS TO CONVERT TO 'COUNTRY RETREAT' HOTEL

24/02453/ENSC Hackwood Park Estate. [Request for EIA screening opinion relating to the proposed demolition, refurbishment, restoration and construction works to deliver a country retreat hotel comprising 52 hotel rooms \(approx\), suites and 12 lodges.](#)

Case officer decision that full Environmental Impact Assessment not needed.
Full planning application to be submitted shortly



APPENDIX IX – COUNTY SAVINGS PROGRAMME 2025

In Spring 2024 HCC consulted on its Future Services Provision: *'Hampshire County Council is asking for people's views on the future of some local services in a public consultation on options to help the Authority meet a £132 million budget shortfall by April 2025.'*

Services / funding under review

- Contributions towards non-residential Adult Social Care costs
- Adult Social Care grants programme for voluntary, community & social enterprise organisations
- **Competitive (one-off) grant schemes – (which includes the Parish & Town Council Investment fund, Leader's Community Grant Scheme)** [not incl County Cllr devolved budget]
- Hampshire Cultural Trust
- Planned maintenance budget for Highways
- Highways winter services
- Homelessness Support Services
- Household Waste and Recycling Centres (HWRCs)
- Spend on library stock
- Passenger transport
- Rural countryside car parking charges
- School Crossing Patrols
- Street lighting.

HCC CABINET MEETING OF 14 OCT AGREED ALL PROPOSALS EXCEPT:

HOUSEHOLD WASTE RECYCLING CENTRES – Decision to reject proposals to close local Household Waste & Recycling Centres. *'The 12 sites considered under the Savings Proposals will remain fully open'* [at least for time being]

Aldershot, Bordon, Romsey, Hedge End, Marchwood, Petersfield, Somerley, Alresford, Bishops Waltham, Fair Oak, **Hartley Wintney** and Hayling Island.

Re Select Committee recommendation: 'Following consideration, the Select Committee determined that it did not support the recommendations which had been proposed, and had provided two proposed amended recommendations for consideration by Cabinet...

Councillor Lulu Bowerman, Portfolio holder for Highways and Waste, proposed an amendment to the recommendations, seconded by Councillor Kirsty North, who noted the strength of public feeling about the proposed closures. The amendments removed the proposal to close Tier 3 and 4 HWRCs, and replacement recommendations are shown in bold below.

a) To note the outcome of the 2024 Future Services Consultation in relation to the proposals on the future of the Household Waste and Recycling Centres (HWRCs) network.

b) Cabinet further notes the concern of the Universal Services Select Committee and their recommendation that there should be no closures of HWRCs.

c) Cabinet further notes the progress toward a revised and improved waste and recycling system including the construction of the Materials Recovery Facility in Eastleigh. The work toward identifying a whole system cost for Hampshire's waste and recycling system and the potential once completed for an improved and better recycling and integrated waste partnership between the County Council and its District, Borough and City Council partners.

d) Consequently, Cabinet does not agree to the closure of HWRCs in Tier 3 and Tier 4 (as set out in Table 1, Paragraph 23) and requests that they be included in the county-wide review of waste and recycling to be reported to Cabinet once the revised Simpler Recycling process has been implemented.

SCHOOL CROSSING PATROLS Cabinet also rejected plans to remove School Crossing Patrols from 17 specified locations across the county. Instead, a review will begin into more than 170 school crossing patrol sites to identify whether hard crossings could eventually be installed as an alternative to manned crossings as and when the posts become vacant. The review will start with the more than 30 sites where a school crossing patrol should be in place, but the Council have been unable to recruit to the role.